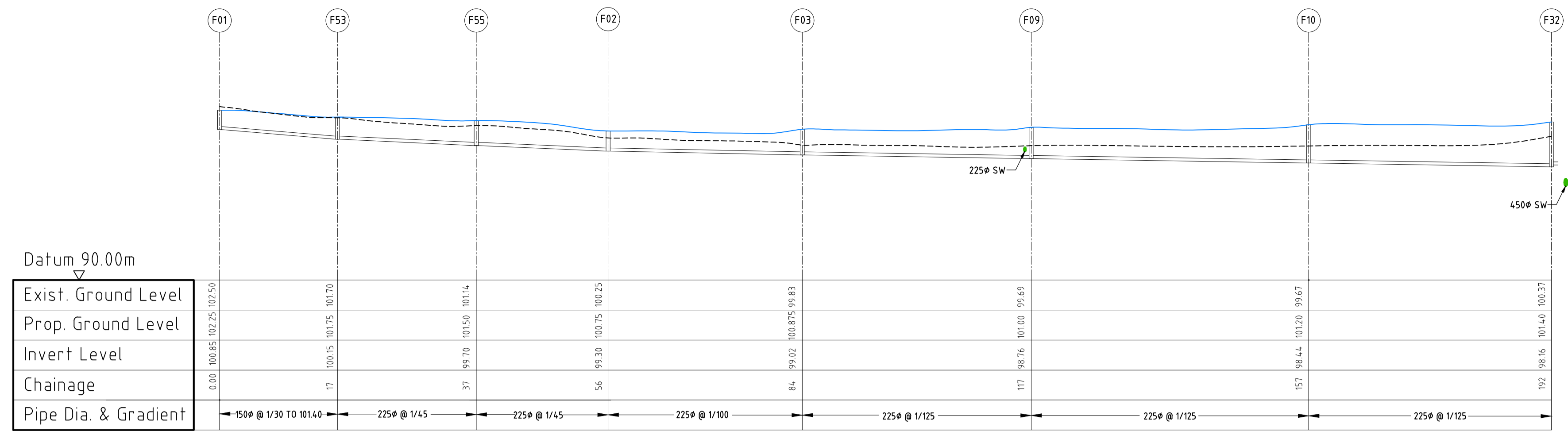


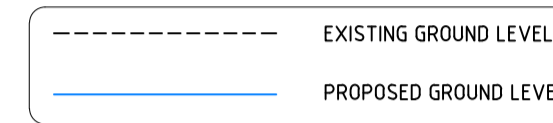
**LONGITUDINAL SECTION THROUGH FOUL SEWER MANHOLES**  
**(F51, F52, F53)**

Horiz. 1:500  
Vert. 1:250

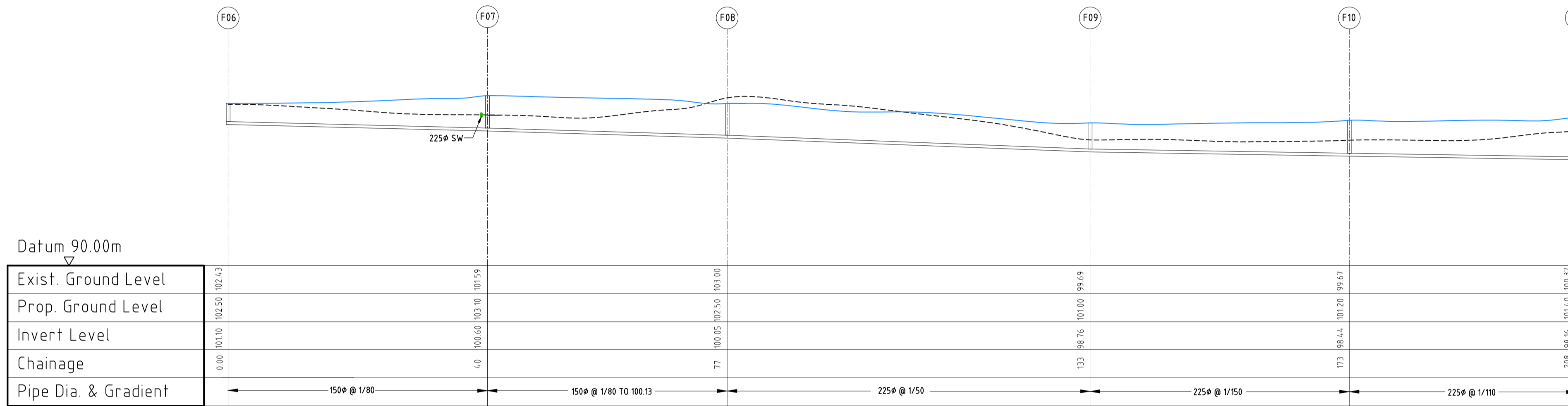


**LONGITUDINAL SECTION THROUGH FOUL SEWER MANHOLES**  
**(F01, F03, F05, F02, F03, F09, F10, F32)**

Horiz. 1:500  
Vert. 1:250

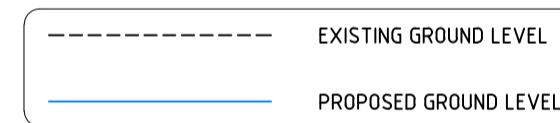


REFER DRAWING 12021-204 FOR FOUL SEWER LAYOUT AND 12021-206 FOR SURFACE WATER LAYOUT

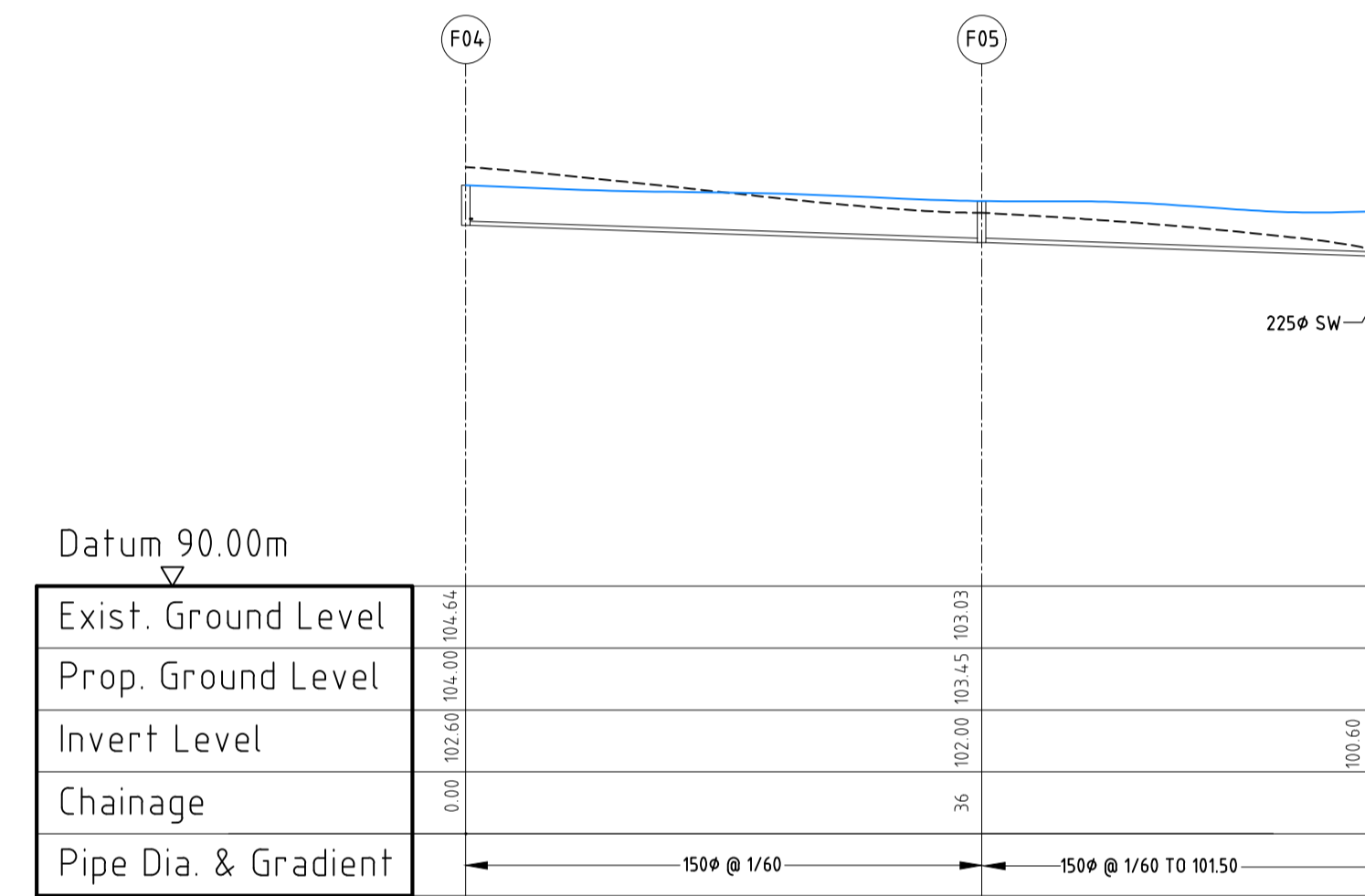


**LONGITUDINAL SECTION THROUGH FOUL SEWER MANHOLES**  
**(F06, F07, F08, F09, F10, F32)**

Horiz. 1:500  
Vert. 1:250

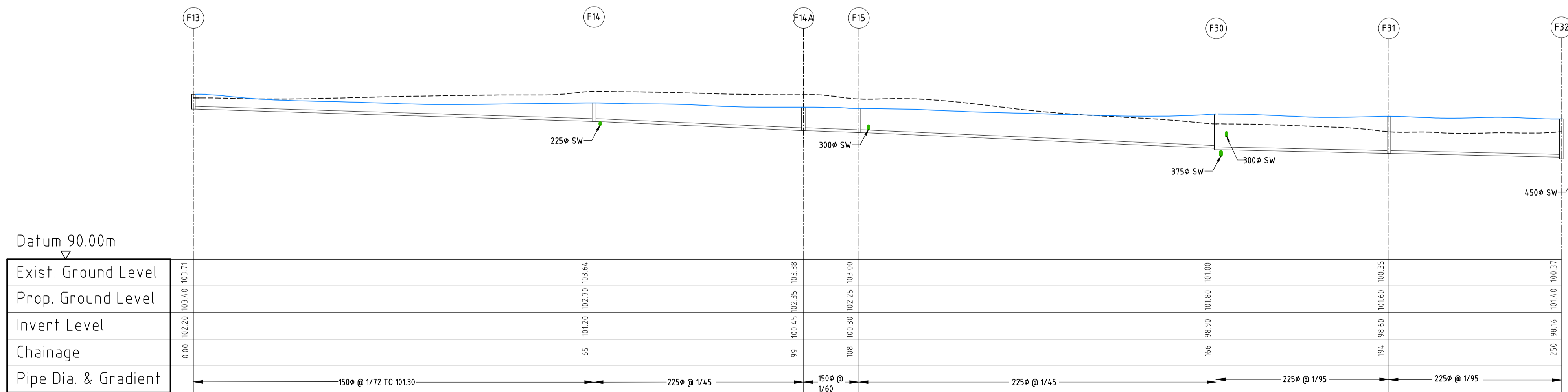


REFER DRAWING 12021-204 FOR FOUL SEWER LAYOUT AND 12021-206 FOR SURFACE WATER LAYOUT



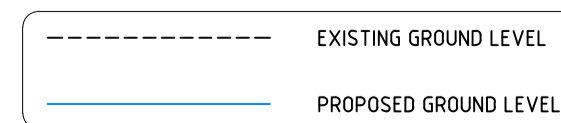
**LONGITUDINAL SECTION THROUGH FOUL SEWER MANHOLES**  
**(F04, F05, F07)**

Horiz. 1:500  
Vert. 1:250

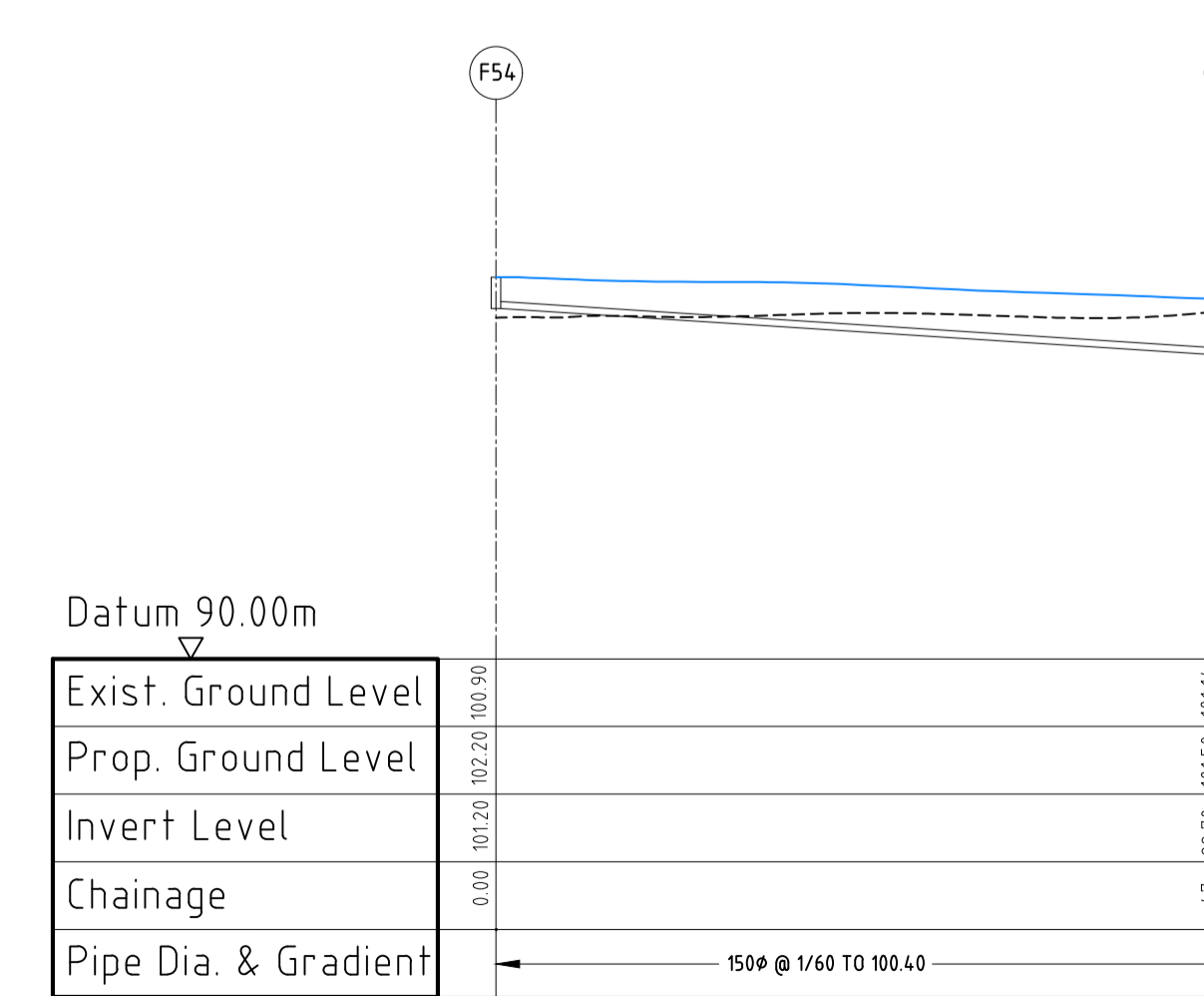


**LONGITUDINAL SECTION THROUGH FOUL SEWER MANHOLES**  
**(F13, F14, F14A, F15, F30, F31, F32)**

Horiz. 1:500  
Vert. 1:250



REFER DRAWING 12021-204 & 12021-205 FOR FOUL SEWER LAYOUT AND 12021-206 FOR SURFACE WATER LAYOUT



**LONGITUDINAL SECTION THROUGH FOUL SEWER MANHOLES**  
**(F54, F55)**

Horiz. 1:500  
Vert. 1:250

P	ISSUED FOR PLANNING (ABP)	27/08/2018
REV	DESCRIPTION	DATE
<b>Donnelly Troy &amp; Associates</b> CONSULTING STRUCTURAL & CIVIL ENGINEERS First Floor Richmond House Richmond Road Fairview, Dublin 3. Telephone: 8532223 Fax: 8532224 info@donnelly-troy.com		
ARCHITECT JFOC ARCHITECTS 11A GREENMOUNT HOUSE, HAROLDS CROSS, DUBLIN 6w.		
PROJECT PROPOSED RESIDENTIAL DEVELOPMENT AT BALLYMANY, CO. KILDARE FOR GLAN DEVELOPMENTS		
DRG. TITLE SECTIONS THROUGH FOUL SEWERS SHEET 1 OF 2		
drawn by	JJ	scales 1:500 @ A1
checked by	S.C.	date AUG '18
JOB No.	12021	DRG. No. 213
		REV. P